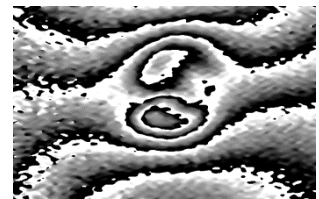


VAC DTECT HOOD



The Vac Dtect Hood is a versatile hand-held laser shearography system, comprising of a combined illumination and capture system mounted in a strong lightweight carbon fibre enclosure. A separate control unit is linked by a 10 meter umbilical. The system provides whole-field, non-destructive testing for rapid wide-field inspection of composites, bonded structures and other advanced materials. Loading the target using a variable vacuum load allows the user to assess the structure of a component. The Hood enables a rapid detection of defects such as delaminations, disbonds, impact damage and other sub-surface abnormalities. The control unit houses the processor and vacuum system that allows for easy transportation.

| Head Module | |
|----------------------------|-------------------------|
| Field of View | 439 cm ² |
| Wavelength | 635nm |
| Power Output | 10 x 35mW LEDs |
| Dimensions | 380x300x230mm |
| Weight | 4kg |
| Laser Classification | 2M |
| Detection Image Resolution | 1602x1202 |
| Frame Rate | 10fps |
| Coverage Time | 5 mins / M ² |



| Control Unit | |
|--------------------------|-------------------------|
| Processing Time | |
| Fringe monitoring | Live |
| Phase wrapped images | <3s |
| Phase unwrapped imaging | <3s |
| Information Outputs | |
| Documentation | PDF report function |
| Image Format | AutoSaves JPEG |
| Video | Configurable resolution |
| Data Output | USB 2 |
| Interface Device | Wireless keyboard |
| Loading Methods | Vacuum |
| System Dimensions | 600x450x300mm |
| Umbilical Length | 10m |
| Power Supply | 110 VAC |
| System Power Consumption | 1kW |
| Operating Temperature | 5° – 40° |

